

## MU/MU-B

Метрические размеры

Размеры фланцевых подшипников  
указаны в соответствии со стандар-  
том ISO 3547

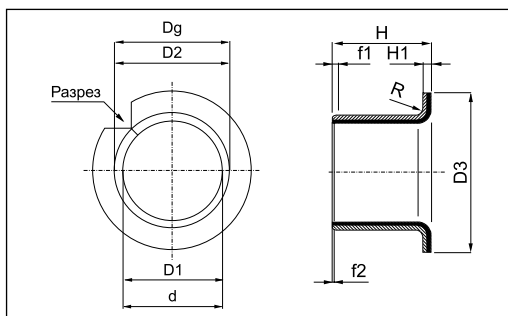
Артикул изделия:

|          |       |    |    |
|----------|-------|----|----|
| MU       | F     | 06 | 04 |
|          | Форма |    | Н  |
| Материал |       | D1 |    |

Допустимые отклонения:

Длина (H) = ±0.25

Фланец (D3) = ±0.50



| Артикул изделия | D1 | D2 | D3 | H    | D1 (После установки) | Dg (Диаметр корпуса) | d (Диаметр стержня) |
|-----------------|----|----|----|------|----------------------|----------------------|---------------------|
| MU F 0604       |    |    |    | 04   |                      |                      |                     |
| MU F 0607       | 06 | 08 | 12 | 07   | 5.990 ÷ 6.055        | 8.000 ÷ 8.015        | 5.990 ÷ 5.978       |
| MU F 0608       |    |    |    | 08   |                      |                      |                     |
| MU F 0805.5     |    |    |    | 5.5  |                      |                      |                     |
| MU F 0807.5     | 08 | 10 | 15 | 7.5  | 7.990 ÷ 8.055        | 10.000 ÷ 10.015      | 7.972 ÷ 7.987       |
| MU F 0809.5     |    |    |    | 9.5  |                      |                      |                     |
| MU F 1007       |    |    |    | 07   |                      |                      |                     |
| MU F 1009       | 10 | 12 | 18 | 09   | 9.990 ÷ 10.058       | 12.000 ÷ 12.018      | 9.972 ÷ 9.987       |
| MU F 1012       |    |    |    | 12   |                      |                      |                     |
| MU F 1017       |    |    |    | 17   |                      |                      |                     |
| MU F 1207       |    |    |    | 07   |                      |                      |                     |
| MU F 1209       | 12 | 14 | 20 | 09   | 11.990 ÷ 12.058      | 14.000 ÷ 14.018      | 11.966 ÷ 11.984     |
| MU F 1212       |    |    |    | 12   |                      |                      |                     |
| MU F 1217       |    |    |    | 17   |                      |                      |                     |
| MU F 1412       | 14 | 16 | 22 | 12   | 13.990 ÷ 14.058      | 16.000 ÷ 16.018      | 13.966 ÷ 13.984     |
| MU F 1417       |    |    |    | 17   |                      |                      |                     |
| MU F 1509       |    |    |    | 09   |                      |                      |                     |
| MU F 1512       | 15 | 17 | 23 | 12   | 14.990 ÷ 15.058      | 17.000 ÷ 17.018      | 14.966 ÷ 14.984     |
| MU F 1517       |    |    |    | 17   |                      |                      |                     |
| MU F 1612       | 16 | 18 | 24 | 12   | 15.990 ÷ 16.058      | 18.000 ÷ 18.018      | 15.966 ÷ 15.984     |
| MU F 1617       |    |    |    | 17   |                      |                      |                     |
| MU F 1812       |    |    |    | 12   |                      |                      |                     |
| MU F 1817       | 18 | 20 | 26 | 17   | 17.990 ÷ 18.061      | 20.000 ÷ 20.021      | 17.966 ÷ 17.984     |
| MU F 1822       |    |    |    | 22   |                      |                      |                     |
| MU F 2011.5     |    |    |    | 11.5 |                      |                      |                     |
| MU F 2016.5     | 20 | 23 | 30 | 16.5 | 19.990 ÷ 20.071      | 23.000 ÷ 23.021      | 19.959 ÷ 19.980     |
| MU F 2021.5     |    |    |    | 21.5 |                      |                      |                     |
| MU F 2511.5     |    |    |    | 11.5 |                      |                      |                     |
| MU F 2516.5     | 25 | 28 | 35 | 16.5 | 24.990 ÷ 25.071      | 28.000 ÷ 28.021      | 24.959 ÷ 24.980     |
| MU F 2521.5     |    |    |    | 21.5 |                      |                      |                     |
| MU F 3016       | 30 | 34 | 42 | 16   | 29.990 ÷ 30.085      | 34.000 ÷ 34.025      | 29.959 ÷ 29.980     |
| MU F 3026       |    |    |    | 26   |                      |                      |                     |
| MU F 3516       | 35 | 39 | 47 | 16   | 34.990 ÷ 35.085      | 39.000 ÷ 39.025      | 34.950 ÷ 34.975     |
| MU F 3526       |    |    |    | 26   |                      |                      |                     |
| MU F 4016       | 40 | 44 | 53 | 16   | 39.990 ÷ 40.085      | 44.000 ÷ 44.025      | 39.950 ÷ 39.975     |
| MU F 4026       |    |    |    | 26   |                      |                      |                     |
| MU F 4516       | 45 | 50 | 58 | 16   | 44.990 ÷ 45.105      | 50.000 ÷ 50.025      | 44.950 ÷ 44.975     |
| MU F 4526       |    |    |    | 26   |                      |                      |                     |

Допустимые отклонения: Артикул

MU F 0604

Артикул

MU F 1822  
MU F 2011.5  
MU F 3016  
MU F 4516

f1

0.20÷0.80  
0.20÷1.00  
0.20÷1.00  
0.80÷1.60

f2

0.10÷0.40  
0.10÷0.50  
0.10÷0.70  
0.10÷0.70

H1

0.80 ÷ 1.05  
1.30 ÷ 1.55  
1.80 ÷ 2.05  
2.30 ÷ 2.55

R

0.70 ÷ 1.00  
1.20 ÷ 1.50  
1.70 ÷ 2.00  
2.20 ÷ 2.50